



# COASTAL BARRIER SYSTEM



COASTAL STEEL AND GALVANIZING WLL



**COASTAL  
QATAR**  
THE CHALLENGEERS





## INTRODUCTION

At Coastal Qatar, we have always been about constantly taking on engineering challenges, and pushing the boundaries of engineering innovation.

We believe in “Doing it right, the first time; every time”. It’s simply, our commitment to delivering excellence and incorporating passion into all that we do.

Coastal has entered in technology partnership with German based company PASS+CO allowing Coastal to produce Crash Barriers in accordance with EN 1317 and CE certification.

The Coastal Crash Barrier systems are galvanised in our inhouse Hot Dip Galvanizing plant to ensure high quality Standards and delivery schedule.

**PASS+CO**<sup>®</sup>  
BARRIER SYSTEMS GMBH

  
**COASTAL**  
QATAR  
THE CHALLENGEERS



## BRAND PURPOSE STATEMENT

As integrated engineering specialists, our strength lies in embracing engineering challenges, in simplifying the complex problems, and incorporating passion into all that we do. The Coastal way has always been about constantly challenging the boundaries of engineering innovation, commitment to safety, schedule and quality, thereby delivering excellence to the construction and engineering landscape of Qatar.



## THE COASTAL CULTURE

- We have a free and an open structure that inspire trust
- We are a diverse, multi-cultural group of professionals
- We don't overpromise or under deliver
- We aim to exceed expectations
- We Believe in 'Doing it right, the first time and every time'
- We are driven by and towards accelerated growth, doing it the most ethical way



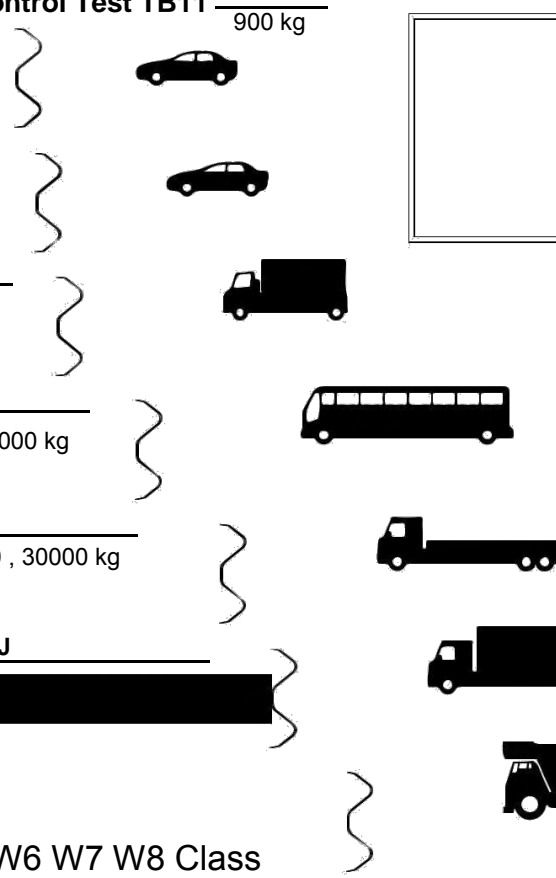
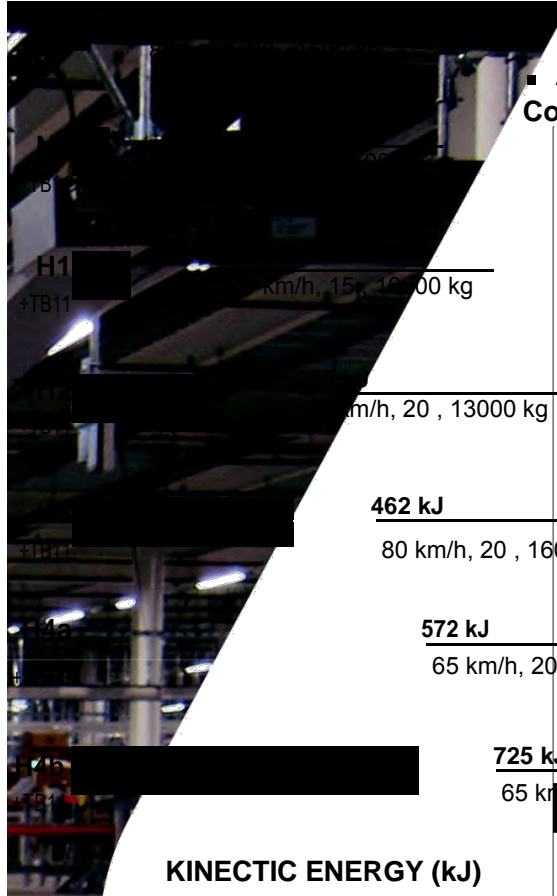
## THE COASTAL VALUES

- Ongoing Innovation & Professionalism
- High levels of Domain Knowledge & Expertise
- Meticulous Planning & Driven By Process
- Acute Transparency & Valuing Relationships

**IMPACT SEVERITY**

■ ASI: Acceleration Severity Index

**Control Test TB11** 900 kg



Working Width W1 W2 W3 W4 W5 W6 W7 W8 Class

Maximum

0.6 0.8 1.0 1.3 1.7 2.1 2.5 3.5 Working

Width(m)

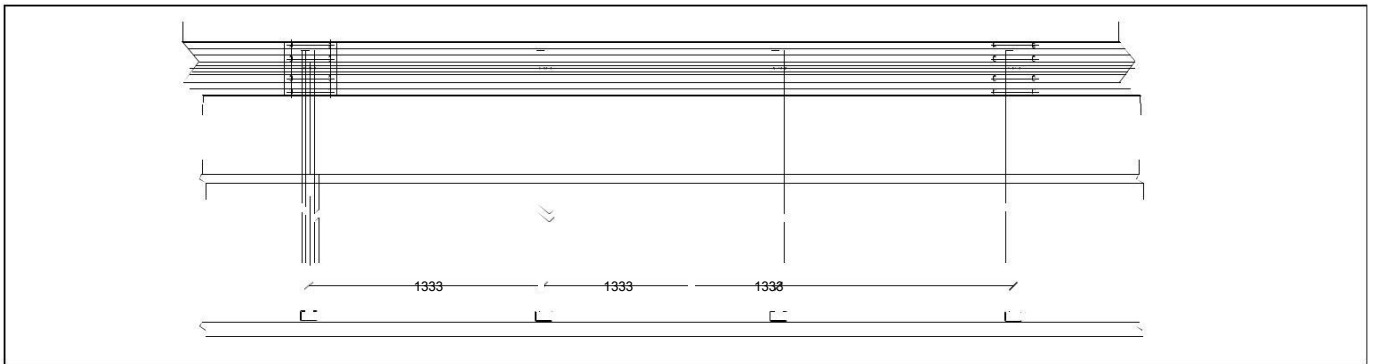
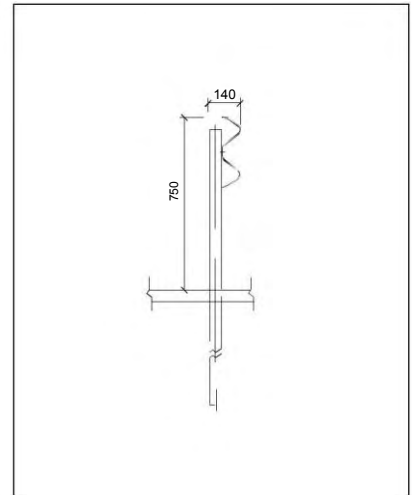
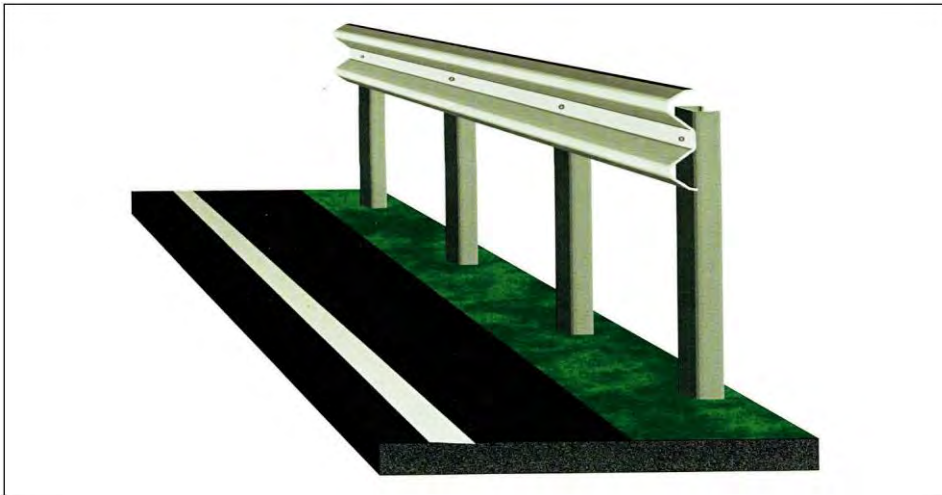

**METAL CRASH BARRIERS**

Metal Crash barriers are basically Road safety system which prevents vehicles from colliding with obstacles such as boulders, walls, buildings and also prevents vehicles entering into large storm drains, steep slopes or deep water.

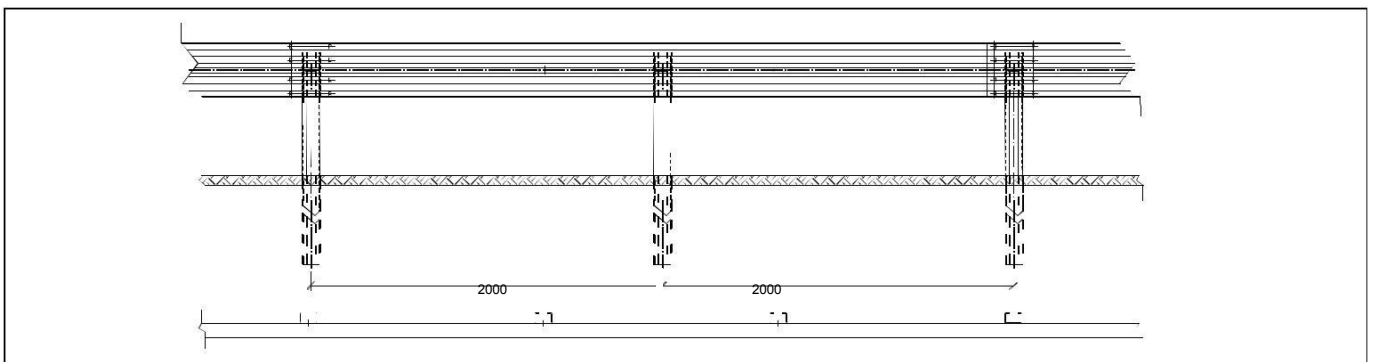
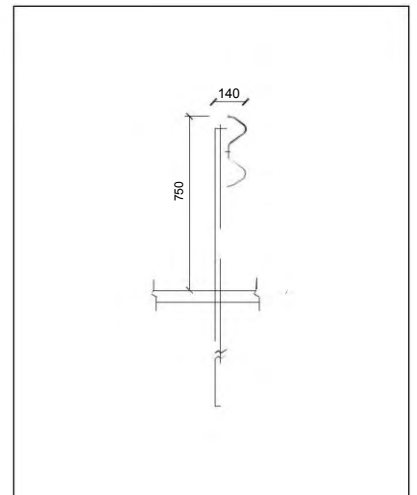
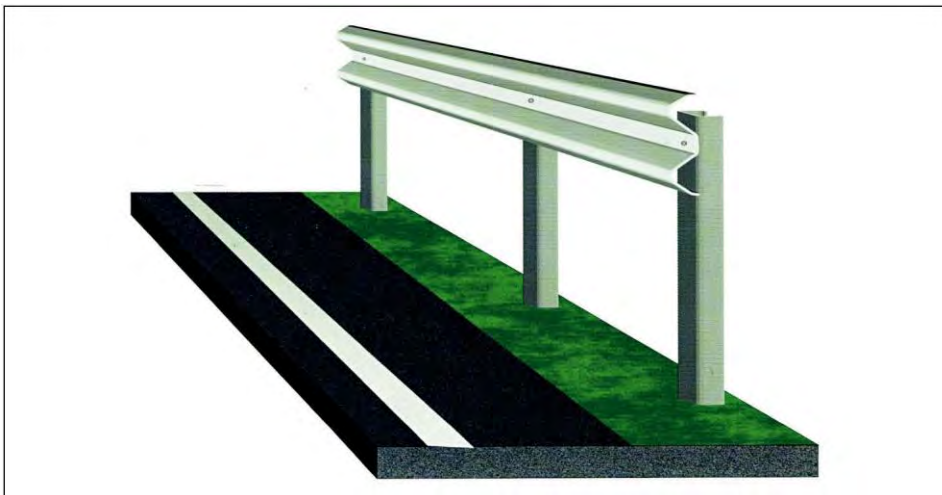
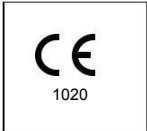
**Features**

- Our tested and proven barriers ensure minimum damage to the vehicle and its occupants.
- During collision the W beam absorbs maximum energy by flattening out and laterally restrains the vehicle from veering over.
- Prevents the vehicle from skidding back onto the carriageway by controlled exit angles by gradual deceleration and effective redirection of the vehicle back onto the road.
  - Provides a good visual guide to the drivers especially in the night.
  - Enables quick repairs in case of accidents.
  - All components are hot dip galvanized for longer life.

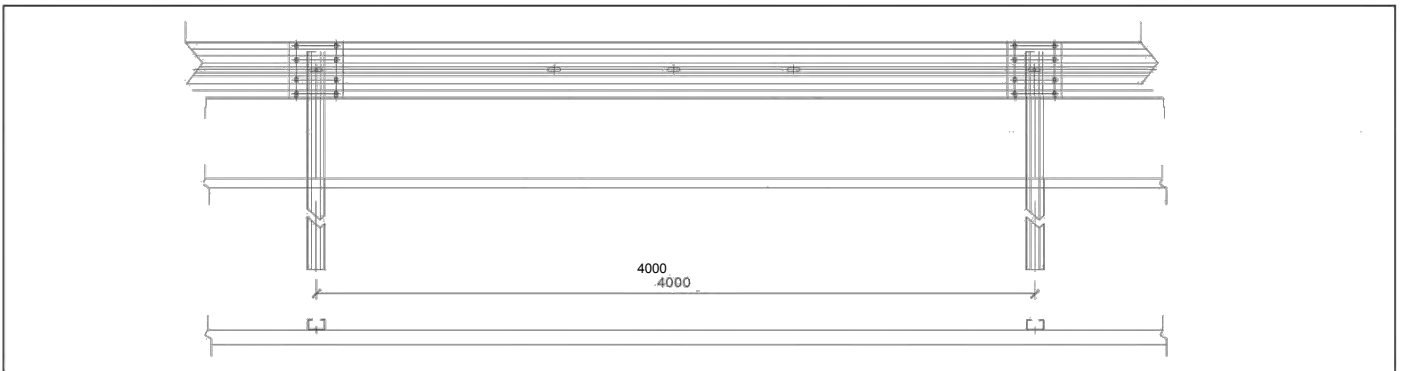
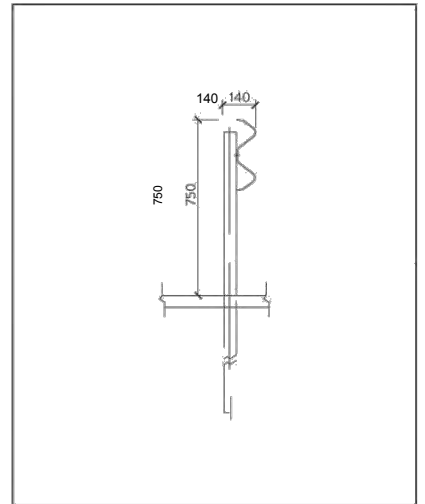
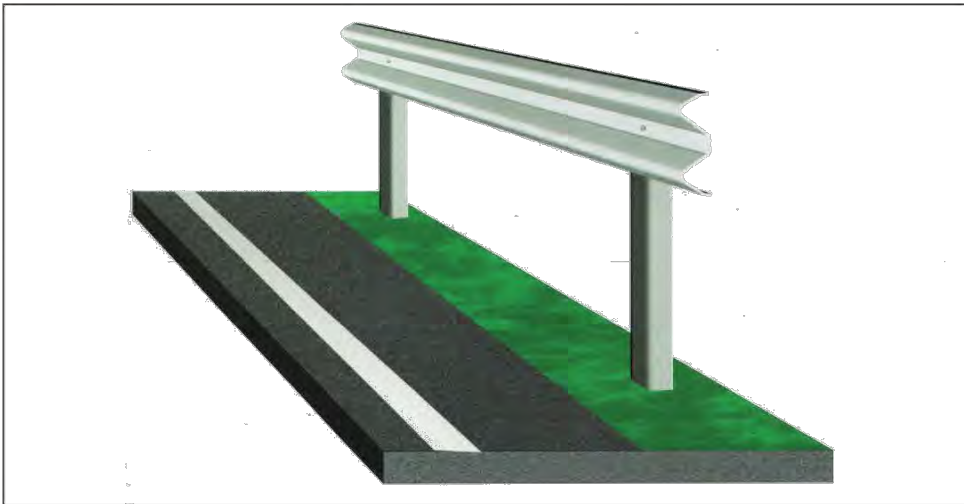
# CP N2-A-W2 (ES 1.33)



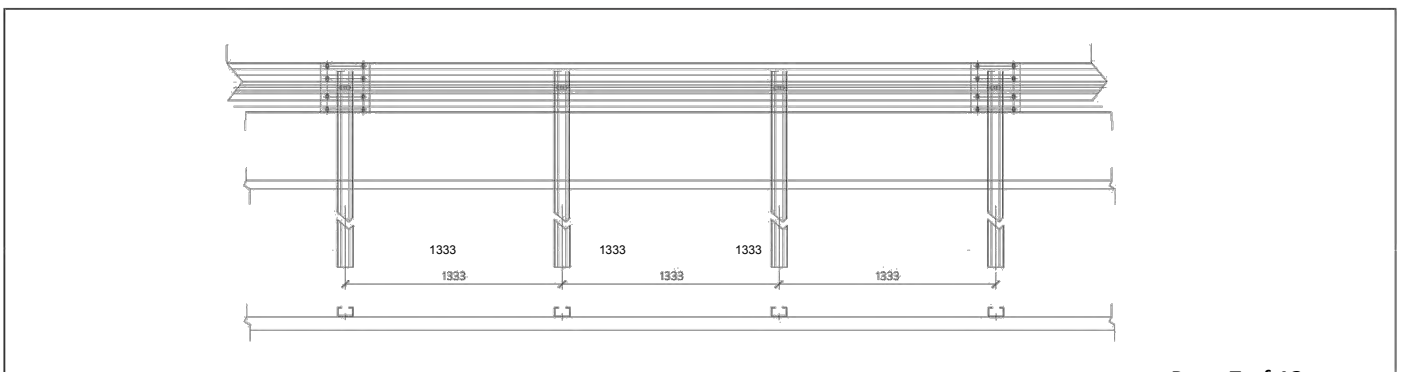
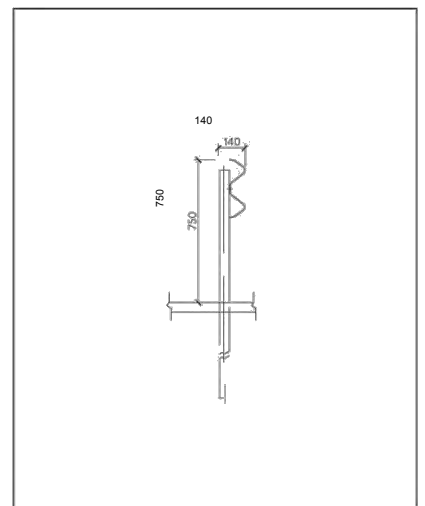
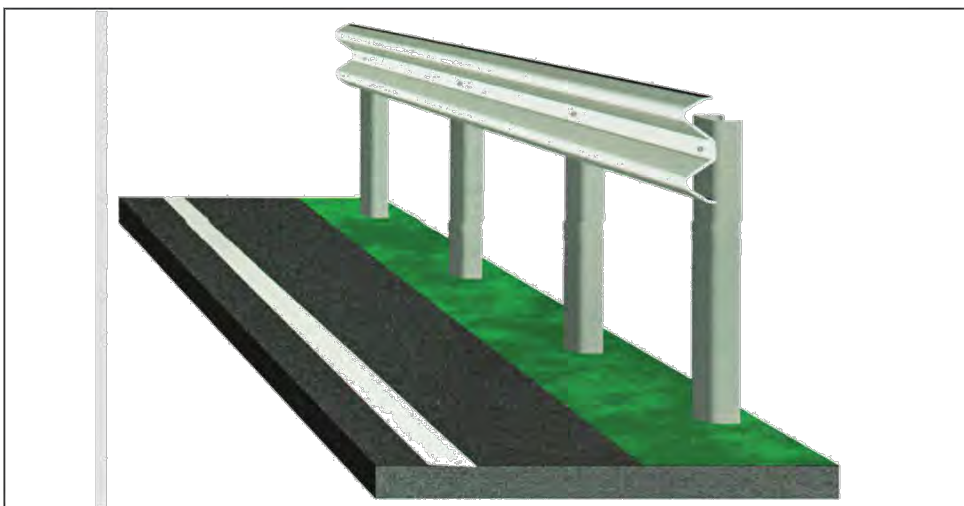
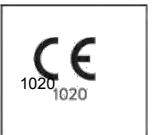
# CP N2-A-W3 (ES 2.0)



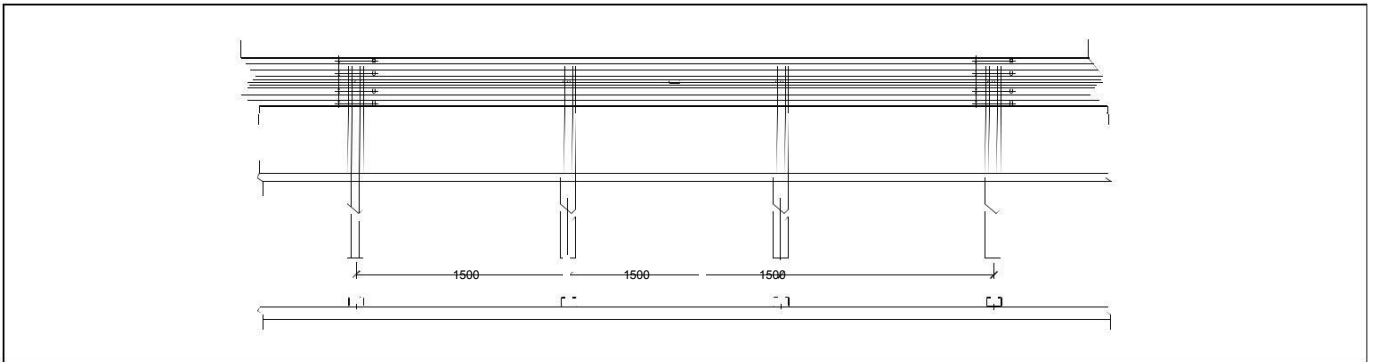
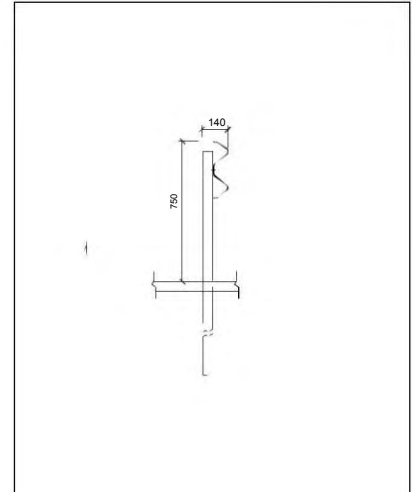
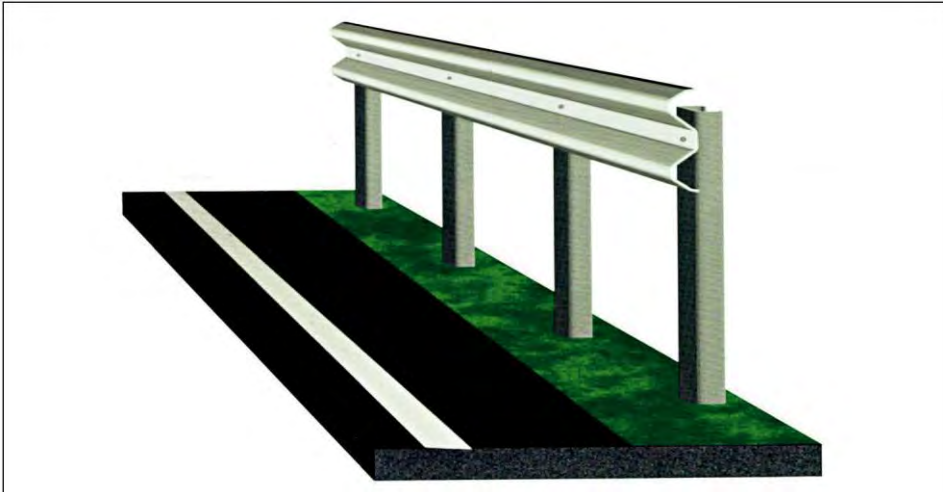
# CP N2-A-W4 (ES400)



# CP H1-A-W3 (ES 1.33)

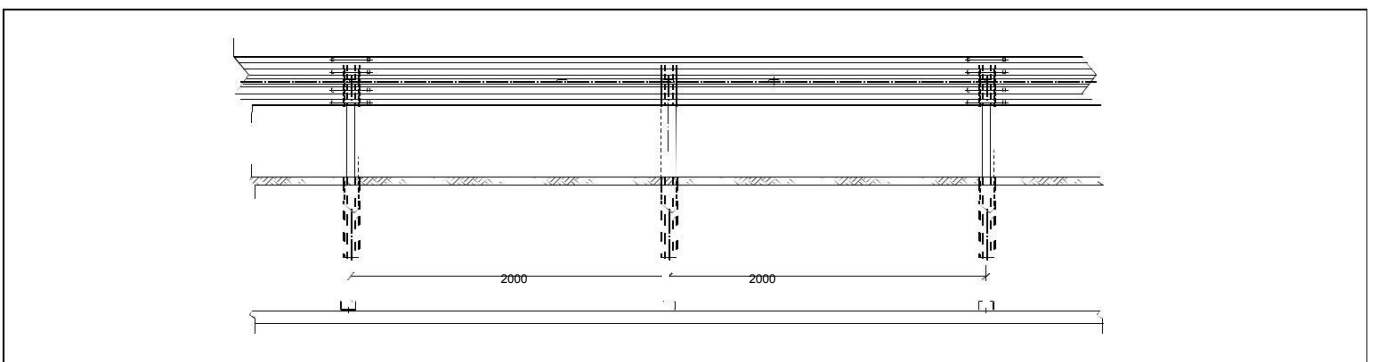
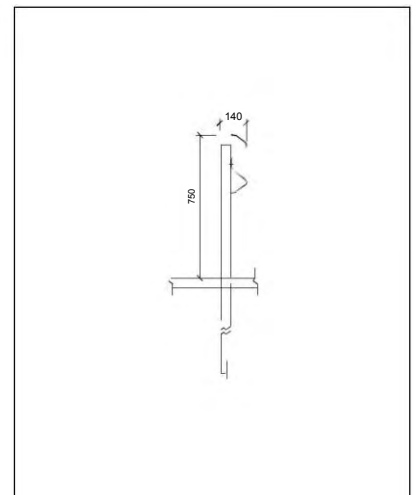
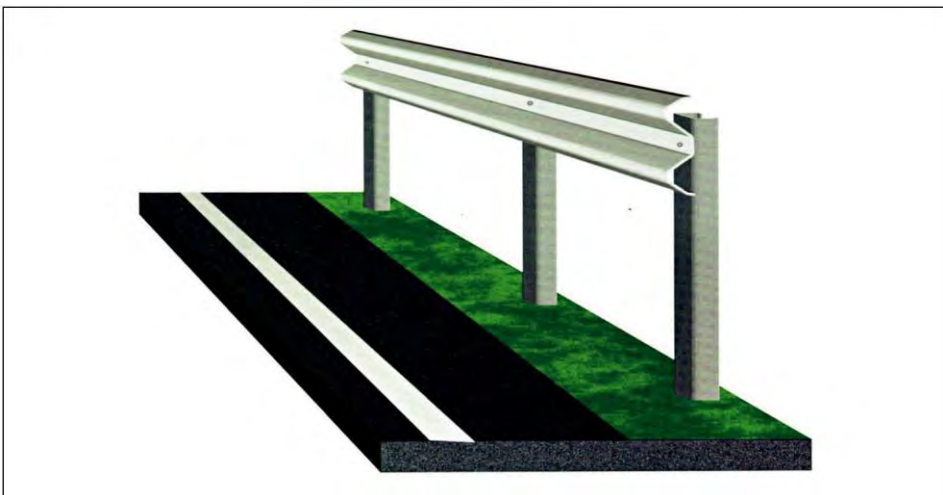


## CP H1-A-W3 (ES 1.50)



## CP H1-A-W4 (ES 2.0)

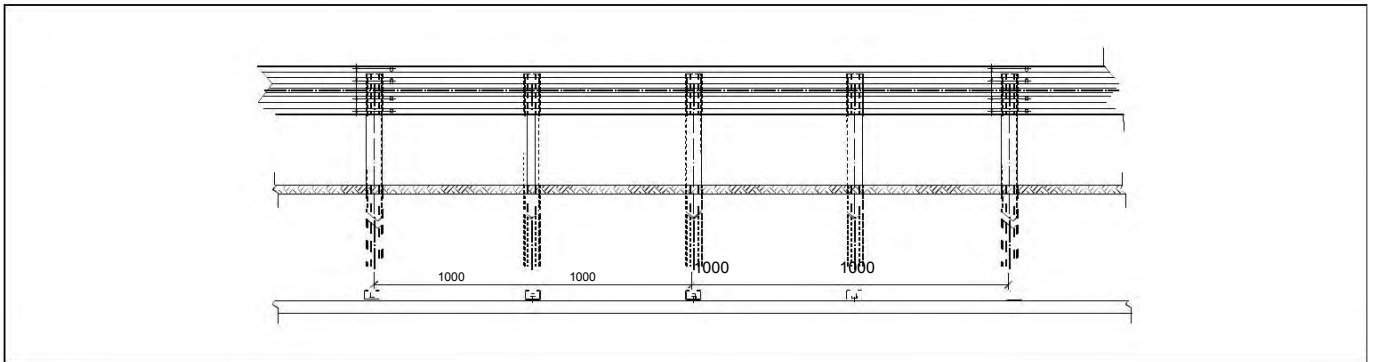
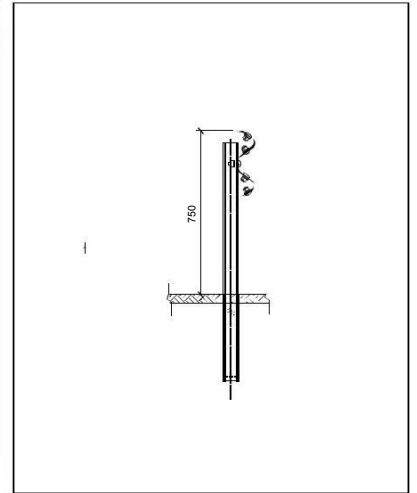
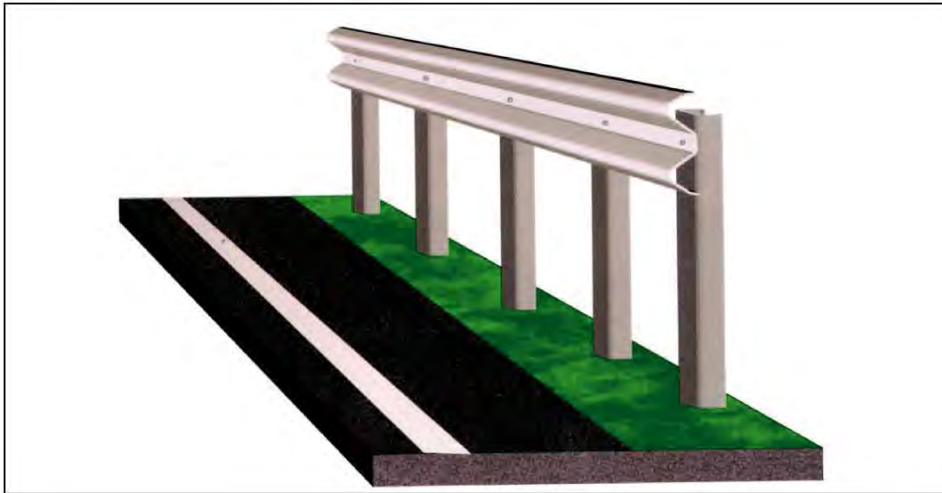
CE  
1020





# CP H1-A-W2 (ES 1.0)

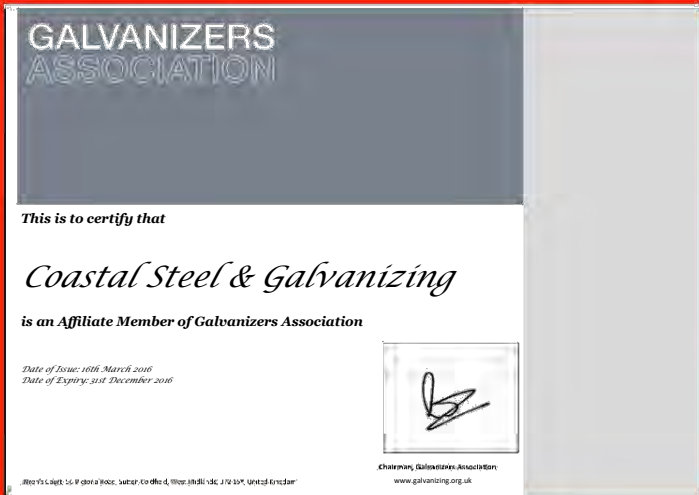
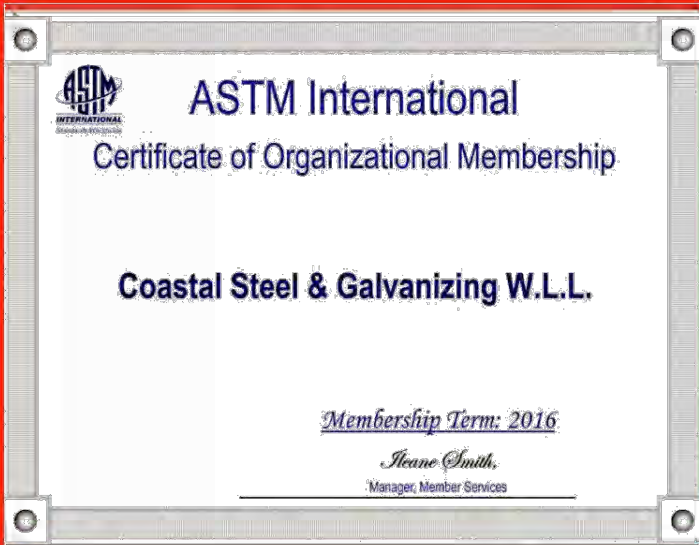
CE  
1020



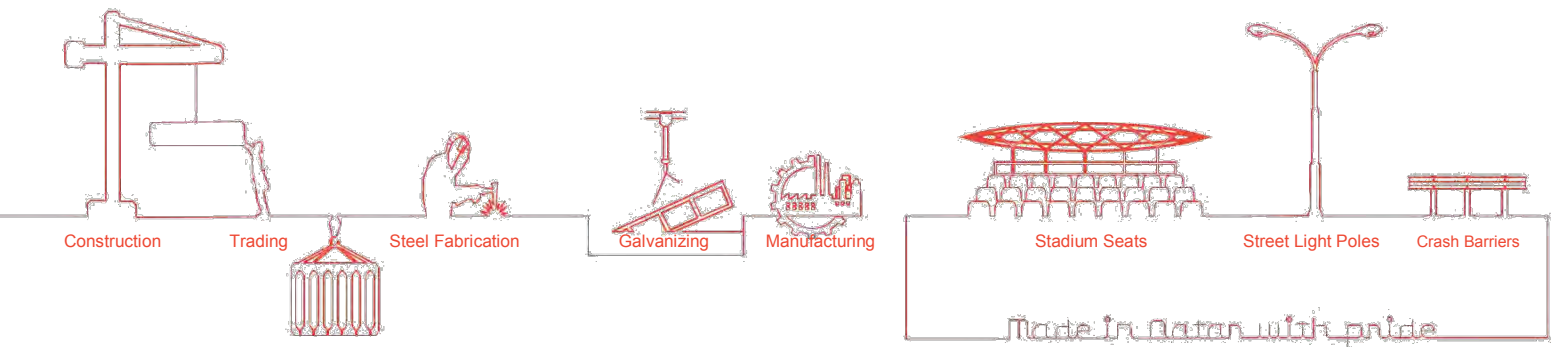
# Our Factory



# CERTIFICATES



# YOUR ENGINEERING NEEDS... UNDER ONE ROOF.



**We are Coastal Qatar and We are the Challengers.**

ENGINEERING  
STEEL & GALVANIZING  
MANUFACTURING  
TRADING

## COASTAL GROUP OF COMPANIES



## CERTIFICATIONS



## AWARDS

