



# COASTAL

## CONTRACTING

THE CHALLENGINEERS

ARCHITECTURAL PRODUCTS  
& SERVICES

A DIVISION OF



**COASTAL**  
HOLDING L.L.C.  
THE CHALLENGINEERS



**COASTAL**  
CONTRACTING  
THE CHALLENGEERS

**SINCE 1979**



- Manufacturing
- Hot Dip Galvanizing
- Engineering
- Steel Fabrication
- Construction
- Architectural Products & services

# At Coastal Holding, we thrive on pushing the boundaries of innovation and engineering.

A proud GCC company playing a pivotal role in local manufacturing in line with Saudi National Vision 2030. Our strength lies in embracing engineering challenges, in simplifying the complex and incorporating passion into all that we do. With an impeccable track record of delivering quality projects on schedule, Coastal has left its imprint on all the landmark projects in GCC, like the Misk City, Amaala Staff Village, Hamad International airport, Qatar National Museum, Six FIFA Stadiums 2022.

Constantly striving for higher levels of expertise and innovation with the agility to pivot in line with market demands and through technology partnership with leading international experts and overseas manufacturers, we are privileged to champion the Made in Saudi initiative with the local manufacturing of products like **Stadium Seats, Toilet Cubicles, Demountable Partition, Players & Staff Lockers, and Landscape Furniture.**

As Integrated Engineering specialists, Coastal Holding is structured with Divisions that synergize among each other, this unique competitive advantage allows Coastal Holding to carry out the majority of the works in-house ensuring schedule and quality compliance. Driven to excel and exceed ourselves with every challenge we take up. We are the **Challengers!**



# MADE IN SAUDI PRODUCTS



Coastal Holding, a diversified conglomerate with deep expertise in construction, manufacturing, and technology, has established Saudi Arabia's first dedicated stadium seat manufacturing facility in Riyadh. Capable of producing 18,000 FIFA-compliant seats per month, the factory integrates cutting-edge international technology with local expertise to meet the demands of the region's harsh climate. In addition to high-performance stadium seating, the facility also manufactures premium-quality toilet cubicles, lockers, demountable partitions, and landscape furniture — all proudly made in Saudi Arabia. With a proven track record that includes supplying seating solutions to six FIFA 2022 stadiums in Qatar, Coastal Holding brings globally tested innovation to the Kingdom. Supported by the Local Content and Government Procurement Authority (LCGPA) and the Ministry of Investment (MISA), the facility is a strategic step toward advancing Saudi Vision 2030 by boosting local manufacturing and self-sufficiency in key sectors.

- **Stadium Seats**
- **Toilet Cubicles**
- **Players Changing Room & Lockers**
- **Demountable Partition**
- **Landscape Furnitures**



## 1. Stadium Seats

Using top-notch technology and machines, award winning seating designs, and top quality base material blended specially for the severe weather in GCC and MENA region, Coastal contracting ability to deliver the best quality stadium seating for the MENA region with the most reasonable price is unbeatable.

Our strength lies in focusing on client's requirements and project's schedule, our technical and design capabilities granted along with the product and our best after sales support.

Having different seating models and our ability to customize the method of installation in-house help our client to get the optimum solution. Our strong suppliers' network allows us to provide a full solution for all types of seats including optional features.



### Lusail FIFA Stadium



2022 FIFA stadium with 80,000 capacity of seats.  
manufactured by Coastal

### AL Bayt FIFA Stadium



2022 FIFA stadium with 60,000 capacity of seats.  
manufactured by Coastal

### Education City FIFA Stadium



2022 FIFA stadium with 45,350 capacity of seats.  
manufactured by Coastal

### Al Janoub Stadium FIFA Stadium



2022 FIFA stadium with 40,000 capacity of seats.  
manufactured by Coastal

### Ahma Bin Ali FIFA Stadium



2022 FIFA stadium with 40,000 capacity of seats.  
manufactured by Coastal

### 974 FIFA Stadium



2022 FIFA stadium with 40,000 capacity of seats.  
manufactured by Coastal

### Abdulaziz bin Musa'ed Al Jiluwi City – Hail, Saudi Arabia



11,500 capacity of seats manufactured by Coastal

### The Gulf Cooperation Council States North of Riyadh, Saudi Arabia



11,500 capacity of seats. manufactured by Coastal



## 2. Toilet Cubicles

With an extensive and diverse range of toilet cubicles and IPS systems, distinguished by their high-quality materials and versatile designs, our toilet cubicles are available in a variety of finishes and constructions to suit different aesthetic and functional requirements. We offer options in Compact Grade Laminate, High-Pressure Laminate (HPL), each selected for its durability and ease of maintenance. Compact Grade Laminate provides a robust and moisture-resistant solution, ideal for high-traffic and wet areas. HPL is renowned for its versatility and wide range of design options, catering to both practicality and style.

Lusail FIFA Stadium



Lusail FIFA Stadium



Education City FIFA Stadium



Al Bayt FIFA Stadium



Al Janoub FIFA Stadium



974 FIFA Stadium



### 3. Players Changing room & Lockers

Coastal Lockers, made from Compact Grade Laminate (CGL) or High-Pressure Laminate (HPL), are the ideal solution for secure, durable, and moisture-resistant personal storage. Designed to perform in high-traffic and humid environments.

Al Janoub FIFA Stadium Players Changing Room.



Al Janoub FIFA Stadium Staff Lockers



974 FIFA Stadium Players Changing Room.



Lusail FIFA Stadium Staff Metal Lockers



Lusail FIFA Stadium Players Changing Room.



Lusail FIFA Stadium Staff Lockers





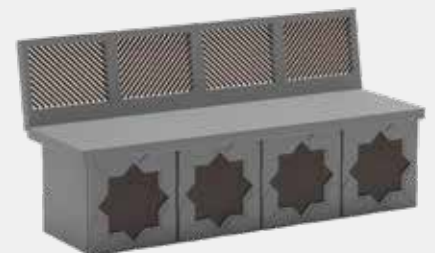
#### 4. Demountable Partition

Our demountable partition system introduces new possibilities and facilitates smooth transitions between various functional areas in an interior space. It provides multiple customized swing and sliding solutions that enhance your interiors. In addition to creating more space and increasing transparency, our demountable partitions can also improve productivity through better acoustics and generate a more positive atmosphere in interior environments.



#### 5. Landscape Furniture

Our exclusive range of Urban Landscape Furniture is designed to enhance public spaces with both functionality and aesthetic appeal. Our collection includes an array of elements such as benches, seating elements, trash bins, bollards, and tree grates. Each piece is crafted with attention to detail and an eye for design, ensuring that our products not only serve their practical purpose but also contribute to the visual and cultural fabric of the urban environment. Our Urban Landscape Furniture is predominantly made from Ultra-High-Performance Concrete (UHPC), a material renowned for its extraordinary durability and versatility.





**COASTAL**  
CONTRACTING  
THE CHALLENGEERS

# With an unyielding commitment to innovation, we are here to transform the architectural landscape of the region

For more than 20 years, Coastal Holding has established itself as a leader in architectural innovation and excellence within the GCC construction industry. As a division of Coastal Holding, our team comprises over 500 professionals committed to surpassing expectations. We take pride in our association with more than 1,000 projects throughout the GCC, encompassing a diverse range of sectors, including sports, hospitality, healthcare, and commercial enterprises. Our comprehensive approach includes design support, engineering, installation, project management, and after-sales services, ensuring the highest standards of quality and efficiency in every endeavor.

We represent world-renowned international brands, providing an exhaustive range of quality architectural solutions for most of the interior and exterior finishes such as flooring solutions, partition solutions, urban landscape furniture and other architectural products. We consciously work towards a sustainable future with our growing portfolio of LEED-compliant products for green buildings.

Coastal Contracting Constantly challenges the boundaries of engineering innovation, commitment to safety, schedule and quality through our certified and experienced project management team from engineers, technicians and labors, thereby delivering excellence to the construction and engineering landscape of GCC.





# Products & Divisions

## Sports Division

Stadium Seats  
Toilet Cubicles & Lockers  
Sports Flooring  
Rubber Flooring & Running Track  
Sports Equipments  
Squash Court  
Padel Court

## Partition Solutions

Toilet Cubicles & Lockers  
Movable Partitions  
Office Demountable Partition  
Other Partition Solutions

## Landscape Furniture

Benches  
Trash Bins  
Bollards  
Planters  
Tree Gratings

## Flooring Solutions

Commercial Carpet  
Rubber Flooring  
Luxury Vinyl & Wooden Floor  
Hospitality Carpet  
Raised Floor  
Entrance Matting  
Sport Flooring  
Other Flooring Solutions

## Other Products

Expansion Joints Covers  
Auditorium Seatings  
Wall Coverings  
Metal Ceiling  
Stretched Ceiling  
Laboratory Furniture  
Acoustic Wall Cladding

# Sports Division



Stadium Seats  
Toilet cubicle & Locker  
Sports Flooring  
Rubber Flooring & Running Track  
Sports Equipments  
Squash Court  
Padel Court



Our Sports Division specialises in delivering comprehensive, end-to-end solutions for sports and athletic facilities of all types. Whether you're developing a new sports complex or upgrading an existing venue, we partner with you from concept to completion to bring your vision to life. Our experienced team provides expert guidance through every stage of the project planning, design, construction, and maintenance ensuring each facility meets the highest standards of performance, safety, and durability.

We use top-tier materials and advanced construction methods tailored to the specific needs of athletes, coaches, and communities. From professional-grade surfaces to cutting-edge amenities, every element is thoughtfully designed to support long-term use, enhance performance, and withstand the demands of active environments. The result is a reliable, high-performance sports infrastructure that's built to last.





Stadium Seats



Sports Wooden Floor



Squash Court



Rubber Flooring & Running Track



Sports Equipments



Padel Court



# Partition Solutions



Toilet Cubicles & Lockers  
Movable Partitions  
Office Demountable Partition  
Other Partition Solutions



Coastal Contracting partition products are installed in many of GCC's prestigious buildings, from Misk City, Amaala Staff Village, FIFA stadiums in Qatar, institutions to education facilities and leading hotel chains. Coastal has been supplying toilet cubicles, lockers, office demountable partitions and operable walls and sliding folding partitions for over 20 years.

Our partner brands have excellent reputation for innovative design with various finishes. We provide a service and maintenance package along with installation to ensure the systems are maintained to the highest quality and performance.





Toilet Cubicles



Lockers

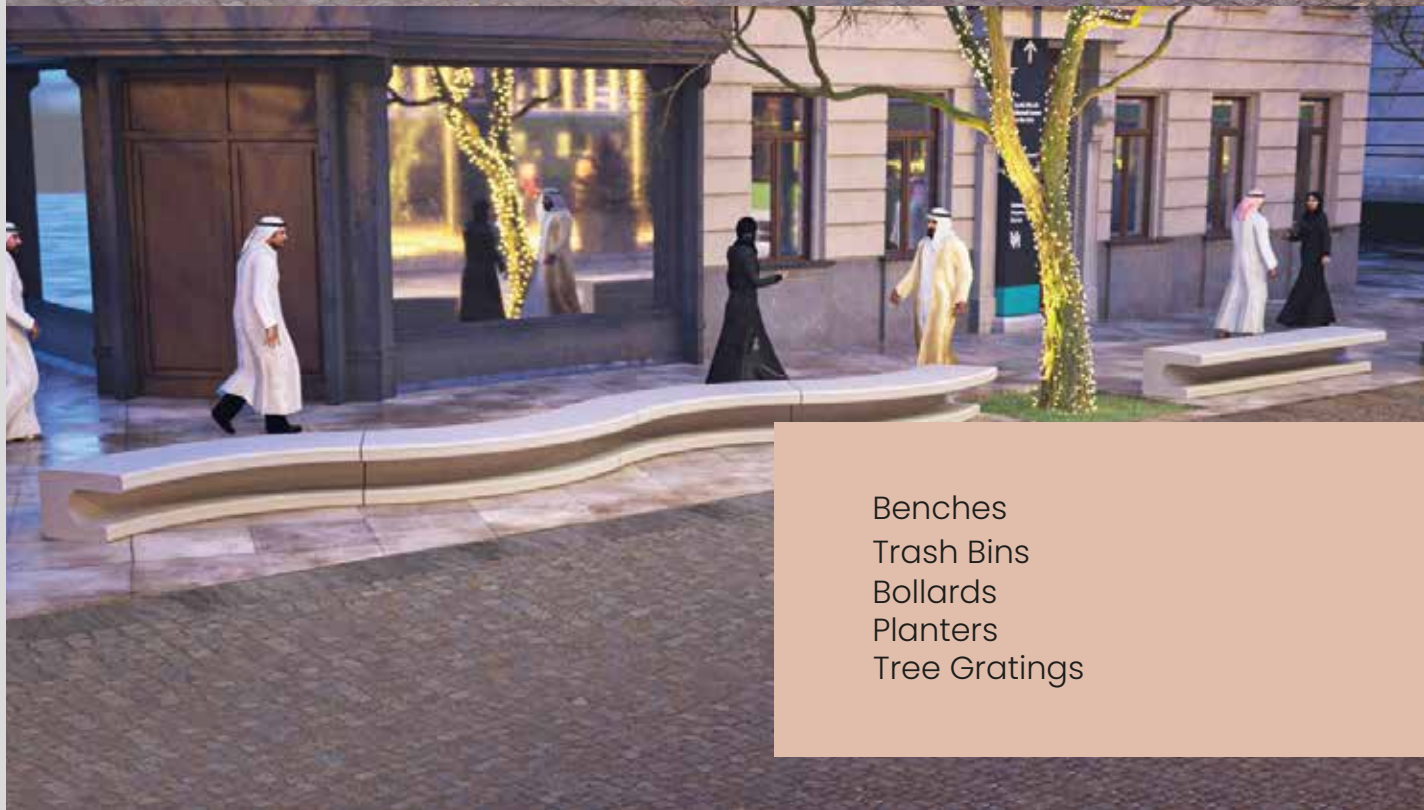


Office Demountable Partition



Movable Partition

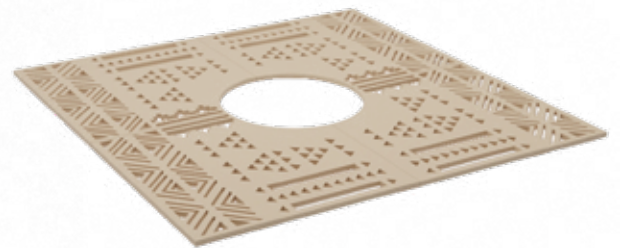
# Landscape Furniture

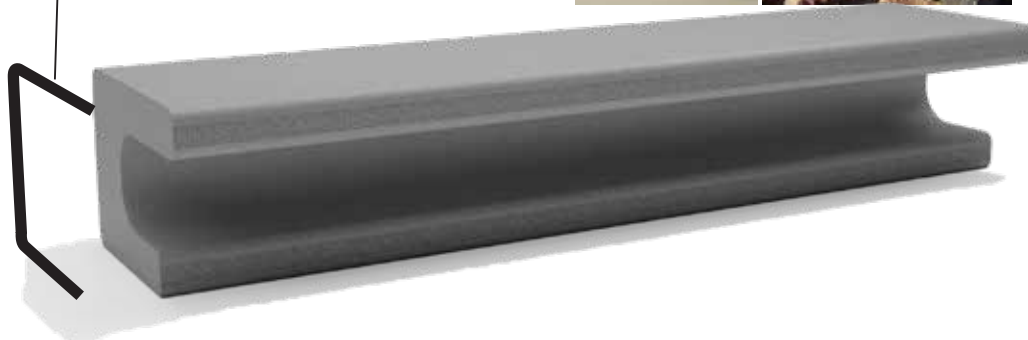
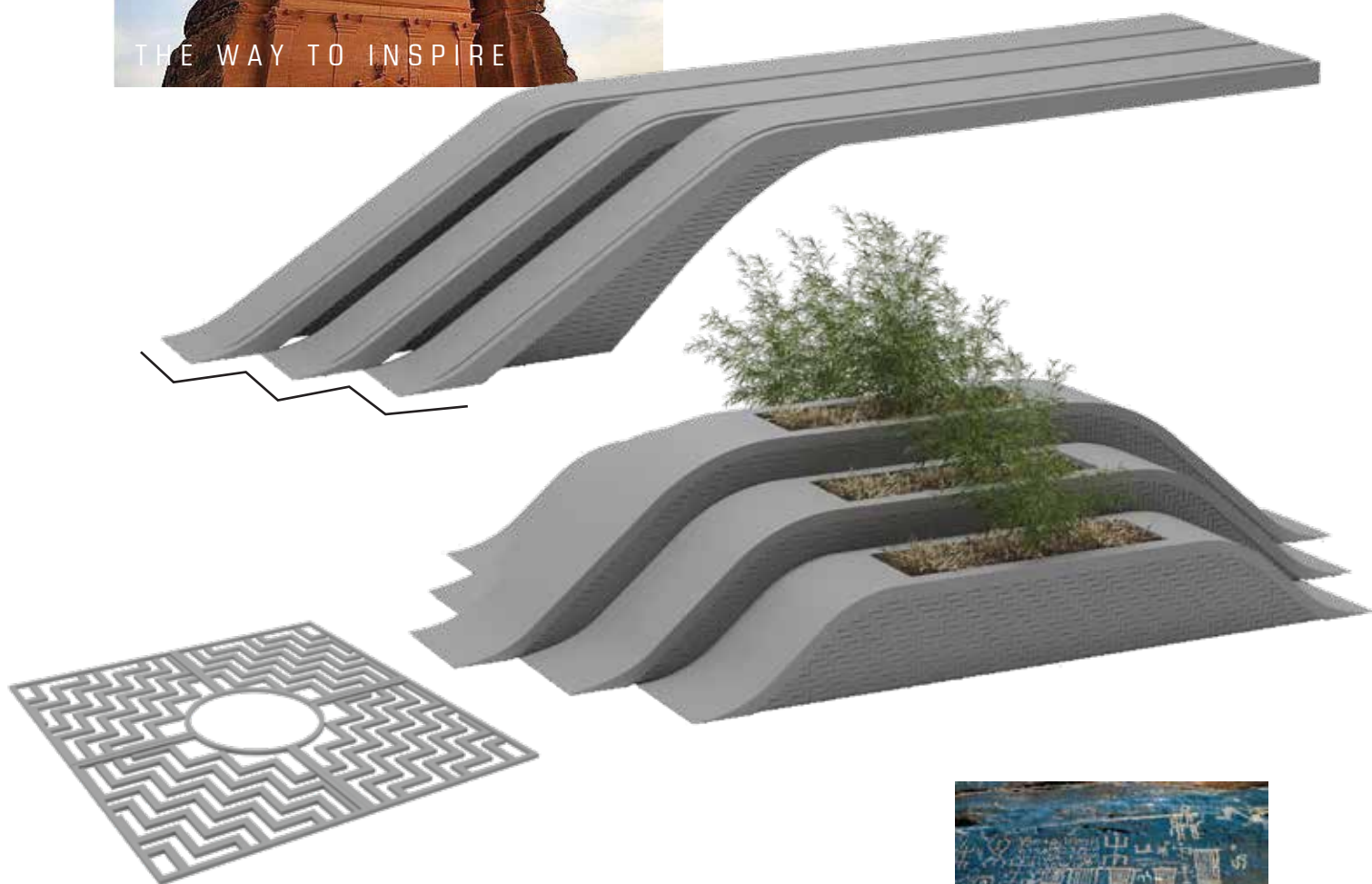
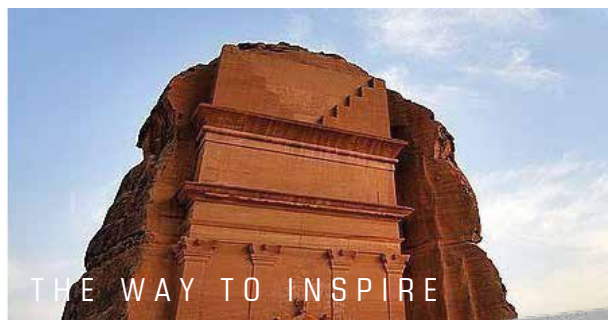


Benches  
Trash Bins  
Bollards  
Planters  
Tree Gratings



# السطراز النجدي







## الطرز العسیری



## الطرز الحجازی







Commercial Carpet  
Rubber Flooring  
Luxury Vinyl & Wooden Floor  
Hospitality Carpet  
Raised Floor  
Entrance Matting  
Sport Flooring  
Other Flooring Solutions

# Flooring Solution

Coastal contracting Provides the very latest innovations in flooring products as well as installation technologies. We offer limitless flooring choices with solutions for markets and all price points. Whichever product you choose, you can count on industry-leading style, superior performance, excellent project management, and unparalleled installation services. We are privileged to be associated with landmark projects in GCC; like Amaala Staff Village KSA, Hamad International Airport Qatar, Ministry of Interior Headquarter in Qatar

Qatar National Library, Qatar National Museum, FIFA Stadium and the most Hotels and Resorts in Qatar. We are a flooring contractor experts, representing the top notch leading international manufacturer in the flooring industry, having a full range of flooring products which include Carpet Rolls, Carpet Tiles, Carpet Rugs, Wood Floors, Resilient Flooring, Raised access flooring, Entrance matting and other flooring solutions.



Carpets Inter®

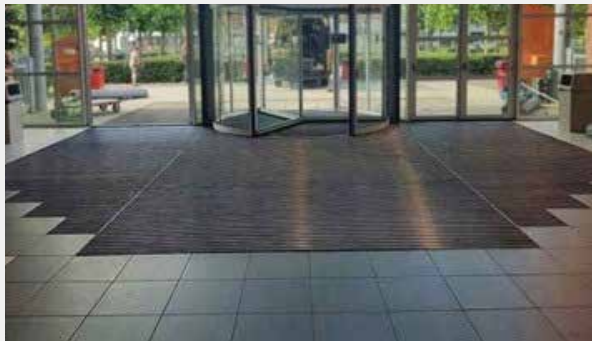
**NETFLOOR®**



Commercial Carpet



Rubber Flooring



Entrance Matting



Hospitality Carpet



Raised Floor



Sport Flooring



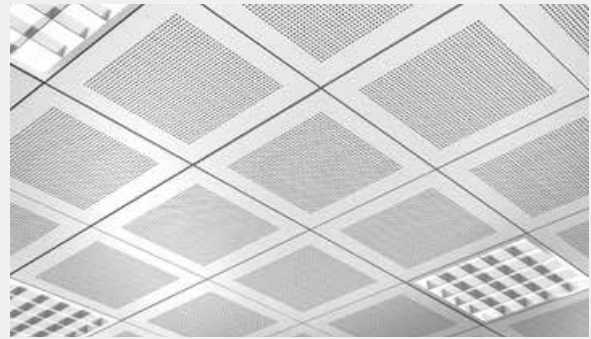
# Other Products



Expansion Joint Covers  
Auditorium Seating  
Wall Coverings  
Metal Ceilings  
Stretched Ceiling  
Laboratory Furniture  
Acoustic Wall Cladding



Expansion Joints Covers



Metal Ceiling



Auditorium Seatings



Laboratory Furniture



Wall Covering



Stretched Ceiling



Acoustic Wall Panel

# Landmark Projects





**Project**

Riyadh Schools Girls Campus,  
MISK City Development, Riyadh, KSA

**Client**

Mohammed Bin Salman Nonprofit City

**Consultant**

WME

**Contractor**

United Engineering Construction

**Scope**

Supply and installation of  
HPL Toilet Cubicle Partition System,  
Paneling & Wall lining Works



**Project**

**Amaala Staff Village, KSA**

**Client**

**Amaala**

**Consultant**

**SIE Consultants**

**Contractor**

**BEC Arabia**

**Scope**

**Supply and installation of 2 nos. of Squash Courts**

**Brand**

**ASB Squash, Czech Republic**



**Project**

**974 Stadium**

**Client**

**Supreme Committee for Delivery & Legacy**

**Consultant**

**Time Qatar**

**Contractor**

**HBK**

**Scope**

**Supply & Installation of Toilet Cubicle/  
IPS Panels/ Lockers**

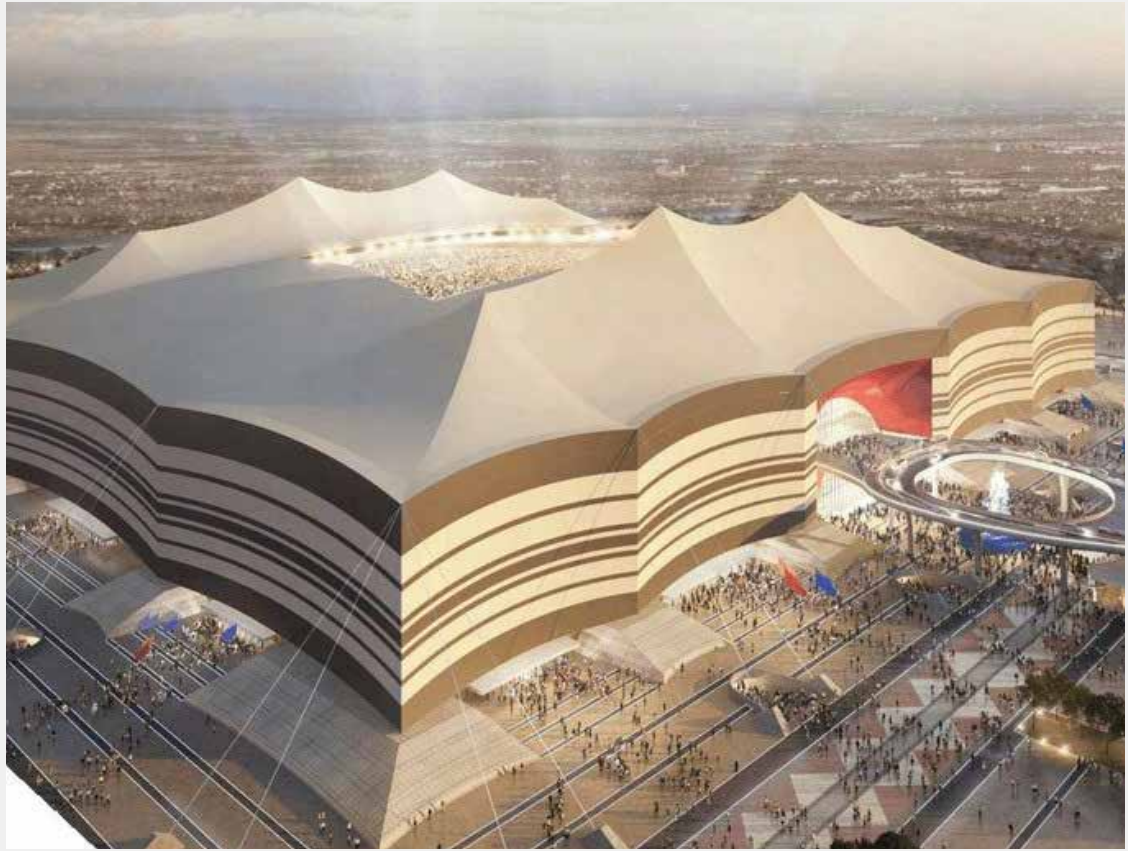
**Brand**

**Merino, India**





## Al Bayt Stadium



### Project

**Al Bayt Stadium**

### Client

**Supreme Committee for Delivery & Legacy**

### Consultant

**ECG - KEO**

### Contractor

**Galfar Al Misnad**

### Scope

**Supply & Installation of Toilet Cubicle/  
IPS Panels**

### Brand

**Kupan, Netherlands**



## Education City Stadium



### Project

**Education City Stadium**

### Client

**Supreme Committee for Delivery & Legacy**

### Consultant

**Astad**

### Contractor

**JPAC**

### Scope

**Supply & Installation of Toilet Cubicle/  
IPS Panels/ Movable Wall**

### Brand

**Kupan, Netherlands**





**Project**

**Al Janoub Stadium**

**Client**

**Supreme Committee for Delivery & Legacy**

**Consultant**

**AECOM**

**Contractor**

**Midmac, PORR, Six Construct JV ( MPS JV)**

**Scope**

**Supply & Installation of Toilet Cubicle/  
IPS Panels/ Movable Wall/Player Lockers**

**Brand**

**Kupan, Netherlands**







## Lusail Stadium



**Project**  
Lusail Stadium  
**Client**  
Supreme Committee for Delivery & Legacy  
**Consultant**  
Louis Berger



**Contractor**  
HBK & CRCC JV  
**Scope**  
Supply and Installation of Expansion  
Joint Covers, Toilet Cubicles & Lockers

**Project**

**Qatar National Library**

**Client**

**Qatar Foundation for Education,  
Science and Community Development**

**Consultant**

**Astad Project Management**

**Contractor**

**Multiplex-Medgulf W.L.L.**

**Scope**

**Supply and installation of Various products  
Wooden Flooring, Acrylic Panel,  
Dock Leveler Carpet flooring,  
Sesame lift & Roller Shutter**





**Project**

**Qatar Petroleum District**

**Client**

**Supreme Committee for Delivery & Legacy**

**Consultant**

**AEB**

**Contractor**

**UCC – Shapoorji Pallonji – Medgulf**

**Scope**

**Supply & Installation of Carpet Flooring**

**Brand**

**Carpets Inter**



#### Project

- Hamad International Airport Hotel
- Hamad International Airport
- Hamad International Airport Terminal Expansion, Concourse C, D & E Expansion

#### Client

Qatar Company for Airport Operation and Management MATAR

#### Consultant

DAR

#### Contractor

Midmac – TAV JV, Midmac-TAV-TAISEI JV

#### Scope

Supply & installation of  
Carpet, Raised Access floor, UHPC Benches, Toilet Cubicles, Vinyl Flooring,  
Expansion Joints & 2 Squash courts





# Glass Toilet Cubicles

**Project**

Hamad International Airport Terminal Expansion,  
Concourse C, D & E Expansion

**Client**

MATAR Qatar company for  
Airport operations and Management

**Consultant**

DAR

**Contractor**

Midmac-TAV JV

**Scope**

Execution of New Toilet Cubicle System Within  
Central Concourse Building, Concourse D & E

**Brands**

Thrislington, UK



Hamad International Airport



## UHPC Benches



### Project

Hamad International Airport  
Passenger Terminal Expansion Works

### Client

MATAR Qatar company for  
Airport operations and Management

### Consultant

DAR

### Contractor

Midmac-TAV JV

### Scope

Fabrication, Supply and Installation of  
Ultra High Performance Concrete (UHPC) Benches







#### Project

Hamad International Airport Passenger Terminal Expansion Works

#### Client

MATAR Qatar company for Airport operations and Management

#### Consultant

DAR

#### Contractor

Midmac-TAV-TAISEI JV

#### Scope

Engineering, Supply and Installation of Raised Flooring, Vinyl Flooring & Carpet Flooring

#### Brand

NetFloor Taiwan, Gerflor France, Carpetsinter Thailand



## Ministry of Interior HQ Building



### Project

Ministry of Interior HQ Building

### Client

Supreme Committee for Delivery & Legacy

### Consultant

CEG

### Contractor

Ministry of Interior

### Scope

Supply & Installation of Carpet Flooring and Demountable Partition

### Brand

Mohawk, USA





**Project**

**Qatar University Higher Administration Building Renovation**

**Client**

**Qatar University**

**Consultant**

**LACASA Qatar**

**Contractor**

**IBA Trading & Contracting Company**

**Scope**

**Supply & Installation of Demountable Partition**

**Brand**

**DEKO, Denmark**



**Project**  
Hilton Salwa Beach Resort & Villas

**Client**  
Qatar University

**Consultant**  
DAR

**Contractor**  
Katara Hospitality | Hotels Group

**Scope**  
Supply & Installation of Carpet Flooring

**Brand**  
Royal Thai, Thailand





**Project**

**New Offices for German Embassy -  
Tornado Tower**

**Client**

**German Embassy**

**Consultant**

**Enwikler.planer.ingenieure**

**Scope**

**Supply & Installation of  
Demountable partition**

**Brand**

**Clestra, France**







**Project**  
**Oliver Wyman Offices – Torando Tower**

**Client**  
**Oliver Wyman**

**Contractor**  
**Clements Interiors**

**Scope**  
**Supply & Installation of Demountable Partition**

**Brand**  
**Clestra, France**



Project  
**Somerset Hotel**  
Consultant  
**ECG**  
Contractor  
**Katara Hospitality | Hotels Group**  
Scope  
**Supply & Installation of Carpet Flooring**  
Brand  
**Royal Thai, Thailand**







**Project**

**George Town University**

**Client**

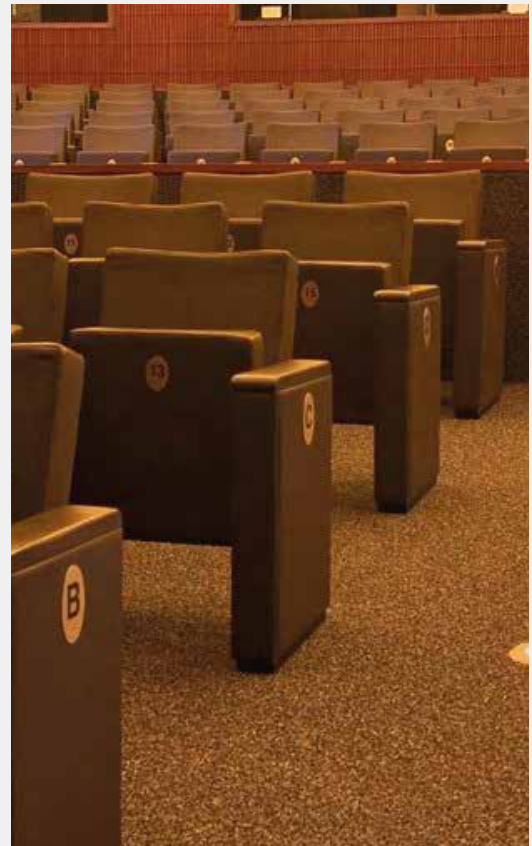
**Qatar Foundation**

**Scope**

**Supply & Installation of Carpet Flooring**

**Brand**

**Mohawk, USA**





**Project**  
Grand Majlis Mercury Hotel

**Consultant**  
AEB

**Contractor**  
Ramco Trading & Contracting

**Scope**  
Supply & Installation of Carpet Flooring

**Brand**  
Royal Thai, Thailand





**Project**

Dukhan Airbase, Qatar

**Client**

Qatar Armed Forces

**Contractor**

Bahadir Construction

**Scope**

Supply & Installation of Toilet Cubicles & Lockers

**Brand**

Merino, India



**Project**

Dukhan Airbase, Qatar

**Client**

Qatar Armed Forces

**Contractor**

QDVC/Builders/Contrco/Butec

**Scope**

Supply & Installation of Toilet Cubicles,  
Wallpapers, Leather Wall Cladding &  
Movable Wall

**Brand**

Merino, India

Muraspec,UK

Parthos, Netherland









**Project**

AI Udeid Air Base (Falcon 5)

**Client**

United States Army Corps of Engineering (USACE)

**Contractor**

ICM S.P.A

**Scope**

Supply and Installation of IPS panels  
and installation of lockers

**Brand**

Thrislington, UK

# Brands







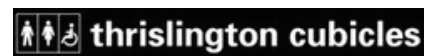
Carpets Inter®



**NETFLOOR®**



**inpro.**



# Clients







[www.coastalholding.com](http://www.coastalholding.com)



Building No. 44,  
Ibn Katheer St, King Abdul Aziz,  
Riyadh 13334, Saudi Arabi  
Email : [info@coastalholding.com](mailto:info@coastalholding.com)